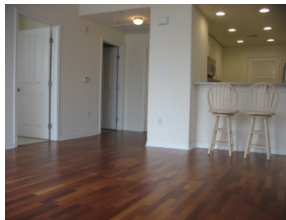


**\$3150/3 br- Rare Gorgeous Rivermark Top Floor-Unit Luxury
Condo Available Immediately - 1 year lease –minimum (Special
Option-\$2950 for 2 year lease)**

3910 Lick Mill Blvd, Santa Clara, CA 95054

Rare 3 BR/2 Top & End Unit Single Floor from award winning architecture in Rivermark



DESCRIPTION

Situated on Rivermark Pkwy in Rivermark Community. Next to the park, school, shopping, Montague Exwy., Modern kitchen with granite slab, Impressive bathroom with granite slab countertops, Recessed lights, Central A/C, 2 car garage with a guest parking for additional parking, Large open spacious with natural light throughout, 18-Foot Ceilings with Impressive Fireplace Features, Large Balcony off the Living Room to Enjoy Your View from the 3rd Floor, State of the Art Exercise Room, Beautiful Pool & Spa- Entertainment Clubhouse,. No Smoking and No Pets!

Bedrooms 3 with Master Suite

Bathrooms 2 full, Deep Bathtub and Separate Stall Shower in Master

Approx. Sq. Ft. 1480 sf

Approx age 3

Parking 2 car garage plus a guest parking

Deposit \$2,000

FEATURES

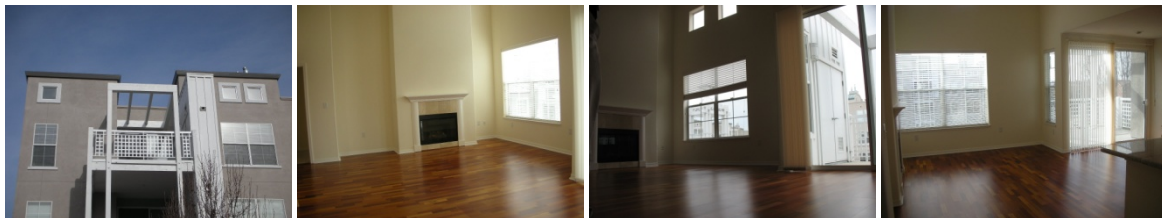
Air conditioning	Central heat	Fireplace
Walk-in closet	Hardwood, Wall to Wall Carpeting	Living room
Club House	Dining room	Dishwasher
Refrigerator	Stove/Oven	Microwave
Washer & Dryer	Laundry area - inside	State of the Art Exercise Room
Balcony	Beautiful Pool and Spas	Built-in BBQ Area

COMMUNITY FEATURES

Playgrounds/Toddler Parks

MORE PICTURES AND SLIDES SHOW

<http://www.shutterfly.com/lightbox/view.sfly?fid=69713dd5738f725e26cd1d30d33b21f1#1235697021198>



CALL JANET AT 408-806-4954 FOR MORE INFO TODAY!!